

# AICON 64



*Explore. Indulge. Escape. All Aboard Aicon 64*

## Key Features

Step aboard Aicon 64, a sleek and stylish motor yacht designed to deliver the ultimate charter experience in Greece. With her striking Italian lines, generous outdoor spaces, and refined interior layout, she offers the perfect balance of sophistication and comfort at sea.

This 67-foot overall yacht features four cabins: a full-beam Master suite, a well-appointed VIP cabin, a Twin cabin—all with en-suite facilities—and a bunk-bed cabin that shares a day head upon request. Ideal for families or small groups of friends, she ensures a relaxing and private onboard experience.

She is fully equipped to impress. Her expansive flybridge, shaded aft deck for al fresco dining, and swim platform for effortless access to the sea make her perfect for soaking up the sun and exploring the crystal-clear waters of the Greek islands.

Let her professional crew of two take care of every detail while you relax, dine, and explore. Your journey is more than just a trip—it's a stylish escape into the heart of the Aegean onboard the Aicon 64.

**Length overall:** 67 ft / 20.4 m

**Cabins:** 4 | **Crew:** 2

**Cruising Speed:** 22 knots | **Top Speed:** 30 knots



Main Salon





Main Salon









Dinette





Cockpit





Master Cabin









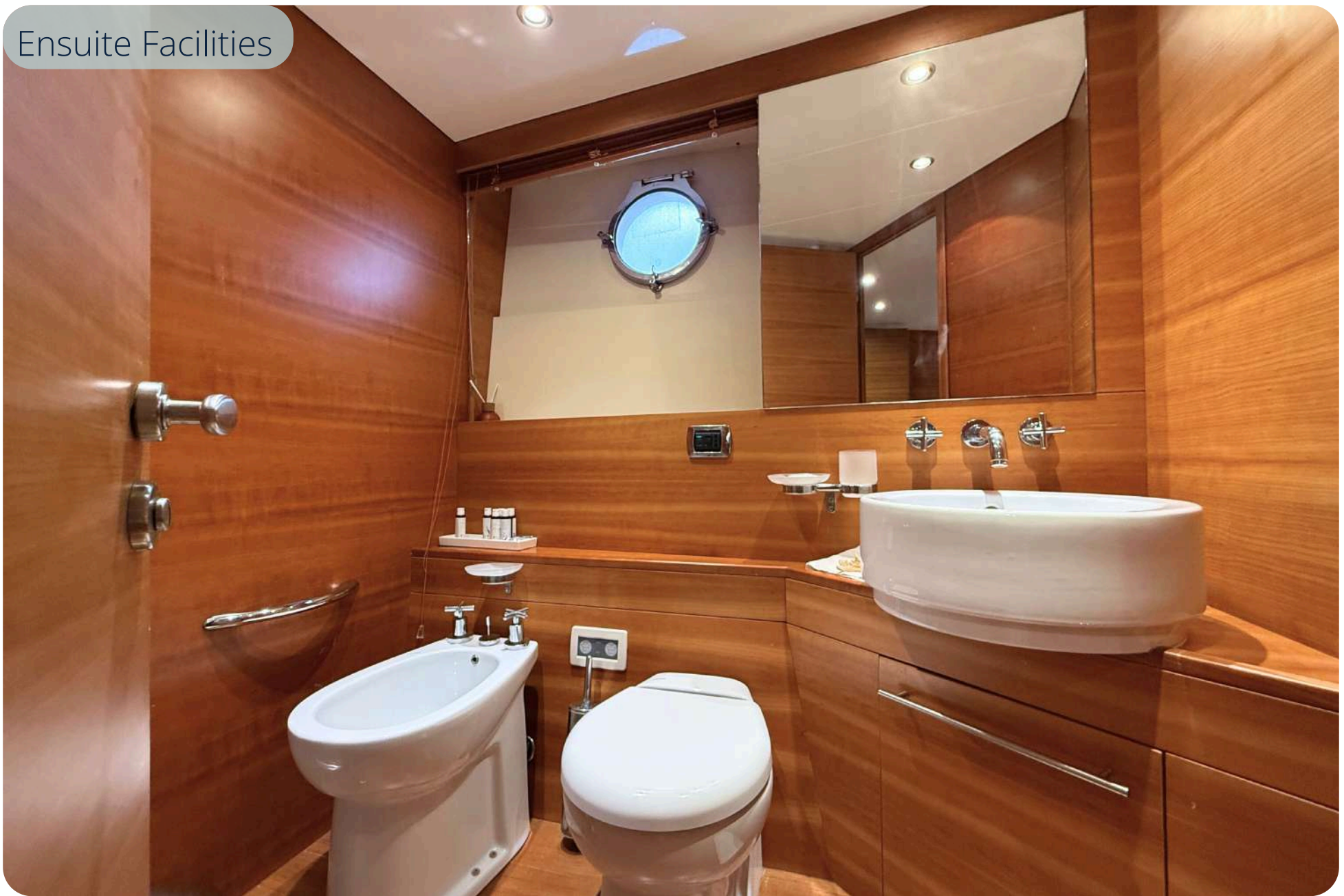




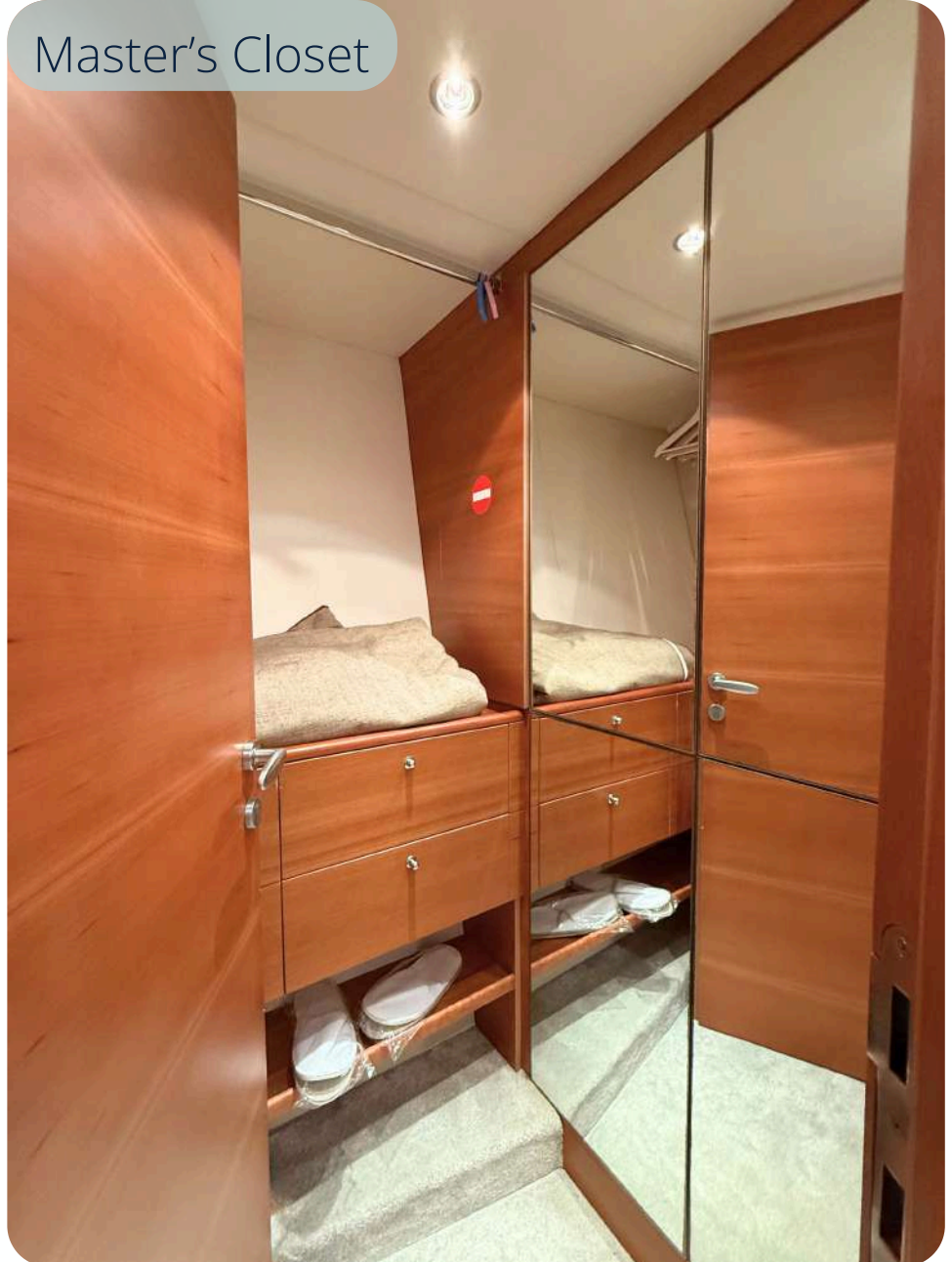




Ensuite Facilities



Master's Closet





VIP Cabin





Ensuite Facilities





Twin Cabin I





Aft Deck





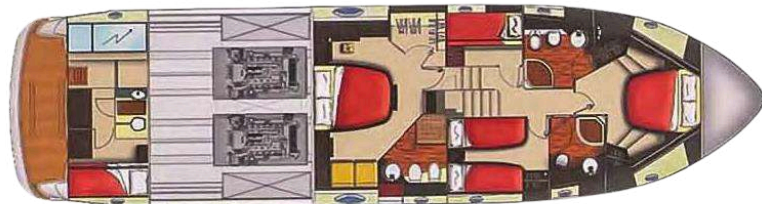
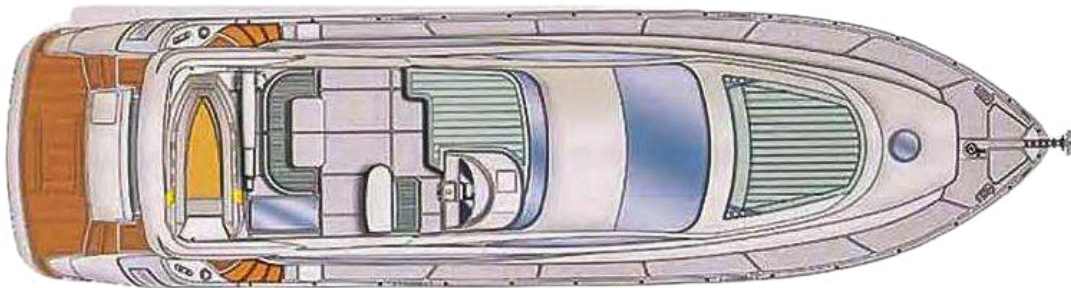
Flybridge



Bow







## SPECIFICATIONS

### ACCOMMODATION

**Number of guests:** 8

**Number of cabins:** 4

**Cabin configuration:** 1 Master, 1 VIP, 1 Twin, all with ensuite cabins, 1 Bunk bed cabin ( shares a day head ) .

**Day Trip Passengers:** 12\*

\*for more than guests 12 on board please inquire with our office. additional fee applicable upon owner's discretion.

*\*for daily charters available only 1 cabin + 1 wc facilities*

**Crew:** 3

**Build/Refit:** 2009

**WATERSPORTS & TOYS** (long term charters)

**Included:**

Canoe | Tubes | Water ski equipment (adults & kids) | Snorkeling equipment | Banana | Sub | Towable Jobe BINAR 2P sofa

**Fuel Consumption:** 380 lt/hr - 420lt/hr

**Cruising Speed:** 22 knots | **Top Speed:** 30 knots

**Generator:** 2 x 17 kW

**Beam:** 5m / 16.4ft

### FACILITIES/AMENITIES

Flybridge with BBQ and fridge | Aft deck for al fresco dining | Sundek with panoramic views | Swimming platform | Tender (3.80m with Suzuki 40HP)

**WATERSPORTS & TOYS** (daily charters)

**Included:**

Snorkeling Gear

**Extra Charge** (rental fee upon request)

Seabob | SUP